



CULTURE: During the Edo era, Japan exercised a strict isolationist policy, closing its doors to all relationships with the outside world. ... Over the years, Western culture has influenced all aspects of **Japanese culture** including art, lifestyle and food.



JAPAN :
CULTURE, FESTIVALS,
FOOD, AND LANDMARKS
BY :
SREYA & NUHA — 81



- Mount Fuji

SEVEN WONDERS OF JAPAN :

- Golden Pavilion
- Mount Aso.
- Matsushima
- Tojinbo
- Lake Mashu.
- Mount Zao.
- Mount Fuji

FESTIVLES :

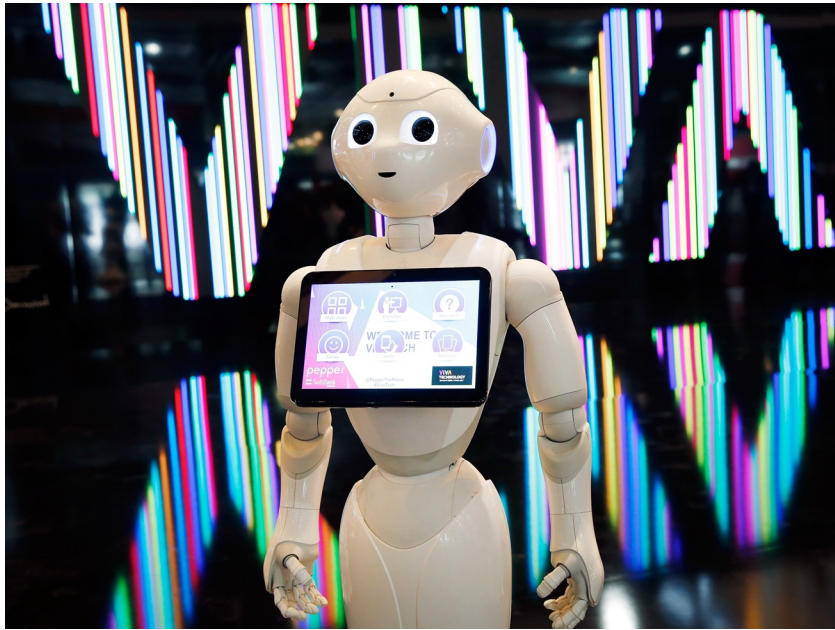
- Gion Matsuri (Kyoto)
- Awa Odori (Tokushima)
- Kanda Matsuri (Tokyo)
- Yuki Matsuri, Snow Festival (Sapporo)
- Nebuta Matsuri (Aomori)
- Kishiwada Danjiri Matsuri (Kishiwada, Osaka)



FOOD :

- Sushi.
- Sashimi
- Tempura.
- Yakitori.
- Miso soup
- Tsukemono pickles
- Udon





JAPANESE TECHNOLOGY :

Japan is a Technology and Innovation Leader. Science and technology in Japan is mostly focused and prominent in consumer electronics, robotics and the automotive industry Japan is well known for its electronics industry throughout the world, and Japanese electronic products account for a large share in the world market, compared to a majority of other countries.

WHAT IS JAPAN'S BEST KNOWN THING :

Japan is known worldwide for its traditional arts, including tea ceremonies, calligraphy and flower arranging. The country has a legacy of distinctive gardens, sculpture and poetry. Japan is home to more than a dozen UNESCO World Heritage sites and is the birthplace of sushi, one of its most famous.



JAPANESE DANCE :

Dance has a long history in Japan and encompasses many forms. The dances performed in kabuki plays are called Nihon buyo (Japanese dance) and are widely enjoyed not just by professional actors but by ordinary people, who learn them as a hobby. There are two types of movements in Japanese dance.



JAPANESE MUSIC :

There are two forms of music recognized to be the oldest forms of traditional Japanese music . They are shōmyō (声明 or 聲明), or Buddhist chanting, and gagaku (雅楽), or orchestral court music, both of which date to the Nara and Heian periods.